

Use Your Time Right

Focus on consumables and making the most of your time in the lab



Our goal is to help you make the best use of your time in the lab

Every moment counts in the dynamic laboratory environment, where time is precious and making the most of it is the key to unlocking the secrets of science and achieving better results.

Precise experiments are the foundation for reliable results. Efficiency is your ally, so streamline your processes, optimize workflows and let innovation flourish.

And, of course, sustainability is not just a buzzword. We all have a responsibility to minimize waste, use resources sparingly and contribute to a greener, more sustainable future. In the lab, time is a precious commodity – use it wisely, use it right.

We have compiled some helpful information for you to become more



precise



reproducible



sustainable



efficient



informed

Just click on the categories at the top to navigate.



Be more... precise

Just a consumable?

Contrary to popular belief, accurate pipetting is not just about technique – the quality of the tips and the interaction between the pipette and the tip also play a major role. Using tips that are not recommended by the pipette supplier can affect accuracy.

Eppendorf has optimized the tip shape, tip material and production quality to perform within permissible error tolerances regardless of the calibration method or autoclaving.

The perfect fit for your Eppendorf pipette: epT.I.P.S.[®] ensure a reliable pipetting system for your specific needs.



[Shop now](#)



Get your sample



Purity grades



Packaging options

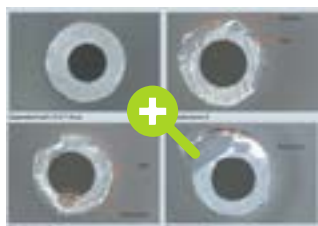
Be more... precise



[Read more](#)

APPLICATION NOTE No. 354

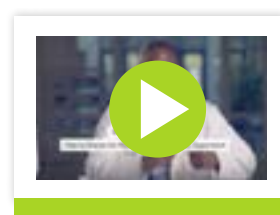
The Tip of the Iceberg: How Pipette Tips Influence Results



Reproducible tip quality

How Eppendorf generates and maintains a high-quality tip orifice for accurate results.

Less volume retention, fewer dispensing errors and more savings on expensive reagents.



[Watch video](#)

How to Choose the Right Pipette Tips

Don't miss the Eppendorf video guide to perfecting your pipetting technique.

Whether you're a pipetting novice or simply want to brush up on your skills, this video series from the pipetting experts at Eppendorf has got you covered!



Be more... reproducible

Can you trust your experimental results?

Many life science laboratories still underestimate the influence of substances which may leach from plastic consumables. These "leachables" can interfere with experiments, which is why Eppendorf does not use any plasticizers, slip agents, biocides or mold release agents during production. This minimizes the risk of both chemical leaching and compromised results.

Choose certified quality for your applications to achieve reliable results and reproducible every time.



[Shop now](#)



Our product range



Select your purity grade



Keep it safe, keep it scanned

Be more... reproducible



Watch video

The extent to which plastic consumables leach chemical substances is still frequently underestimated in the majority of life science applications.

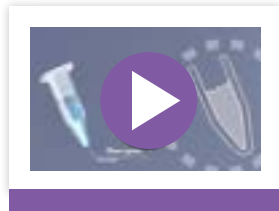
Expert voice

“Researchers should purchase plasticware from a manufacturer that does not use additives and avoid buying from suppliers that refuse to confirm the absence of additives.”

G.I.T. Laboratory Journal 9-10/2009

Dr. Andy Holt (left) and members of his team

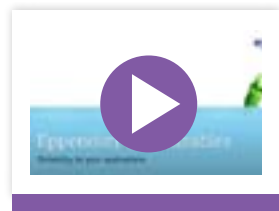
University of Alberta, Department of Pharmacology, Edmonton, Canada



Watch video

Good Plastics – Bad Plastics

How chemical substances from plastic consumables may significantly affect your experiments.



Watch video

Eppendorf Consumables – Reliability for Your Applications

Eppendorf consumables are manufactured from the purest, carefully selected raw materials. Fully automated production in a clean room environment prevents human interaction and contamination.

Be more... reproducible



WHITE PAPER No. 26

Leachables: Minimizing the Influence of Plastic Consumables on the Laboratory Workflows



Production without additives such as

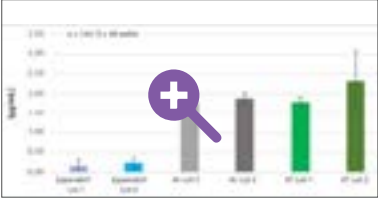
- > Slip agents
- > Plasticizers
- > Biocides



APPLICATION NOTE No. 459

Fake DNA in Your qPCR? – Comparative Evaluation of Leaching Levels in PCR Plates

You can have confidence in our consumables.

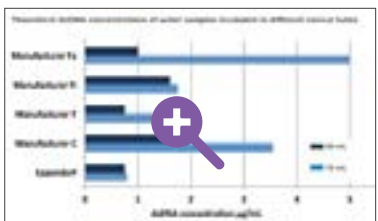


Minimal levels of leachables, less contamination, better results.



APPLICATION NOTE No. 343

Performance Comparison of Eppendorf Conical Tubes: Cap Tightness, Centrifugation Stability and Leachable Levels



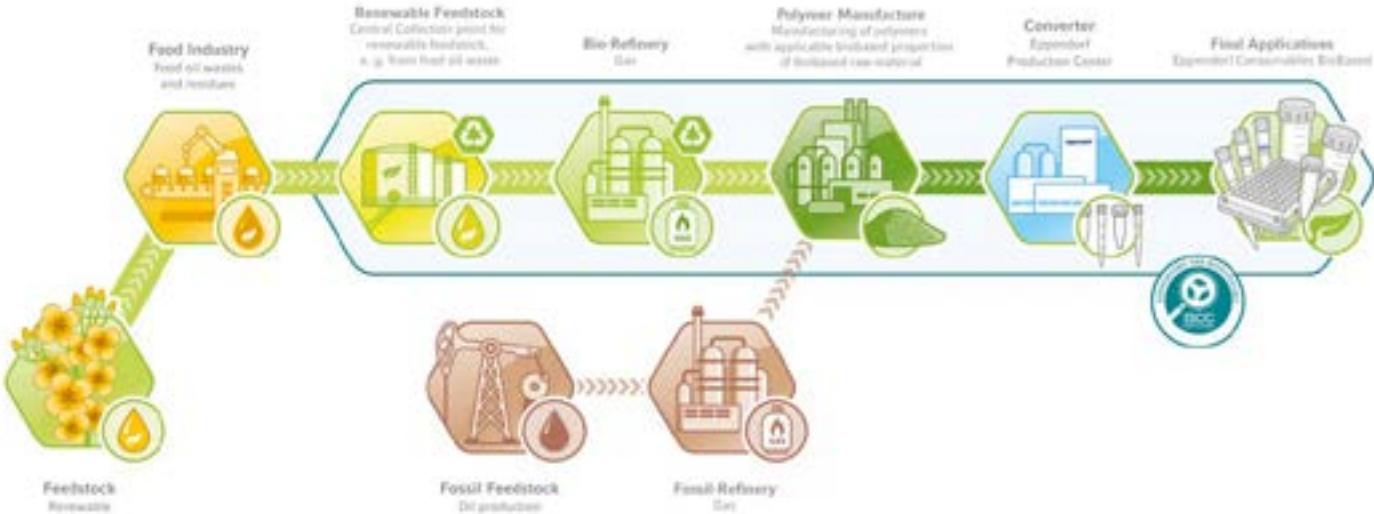
Minimal levels of leachables make them ideal for a wide array of demanding applications.



Be more... sustainable

Get greener in the lab

Sustainability continues to play an ever-increasing role in our daily lives. And it's no different in the lab. With our climate strategy, we aim to reduce carbon emissions in Eppendorf operations to zero by 2028. That means striving for the shortest distance, the most efficient use of resources, the solution that produces the least waste, and the sensible reuse and recycling of materials.



2nd generation feedstock - 1st class consumables



How to become more sustainable in your lab



Discover more green product initiatives

Be more... sustainable



[Read more](#)

Meet your own sustainability targets with the new Eppendorf Tubes® BioBased

Introducing a new generation of conical tubes with screw caps in 5.0 mL, 15 mL, 25 mL and 50 mL.



[Read more](#)

Sustainability is front and center with the new epT.I.P.S.® BioBased Sterile Reloads

Offer a more resource-saving packaging concept for premium quality pipette tips that features TwinLid® technology for safe tip removal, the avoidance of contamination and ease of use.



[Read more](#)

Sustainability meets precision with the new Eppendorf twin.tec® Trace PCR Plates

Discover our new twin.tec. Trace PCR Plates BioBased made of bio-based polymer (mass balance approach). These plates allow you to significantly reduce your carbon footprint yet to maintain the identical technical performance.



[Get your sample](#)

Try it out with a free sample

Use our new bio-based conicals in your lab and know that you are doing good for the environment.



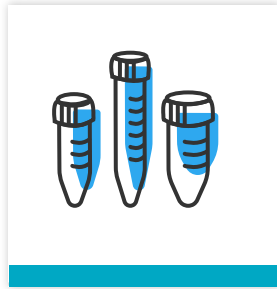
[Read more](#)

Protect your samples and the planet with the new centrifuge 5427 R

Introducing the first Eppendorf microcentrifuge with a hydrocarbon-based coolant (R290). The use of this natural refrigerant is another valuable contribution to sustainability in the lab.



Be more... sustainable



[Read now](#)

Let's Care Together

Sustainability is an issue that poses many challenges but offers many opportunities. We are focusing our efforts on areas where we can have the greatest impact on sustainably developing both the economy and society as a whole.

Join us on this journey towards more sustainable life science laboratories.



[Read more](#)



Be more... efficient

How organized are you?

Scientific studies require orderly sample management and storage to prevent compromised results, delays and financial losses. Fortunately there are ways and means to streamline the process using smart sample storage technologies.



[Shop now](#)



Put an end to
improper labeling



CryoStorage vials -
coded for success



Barcode wizard

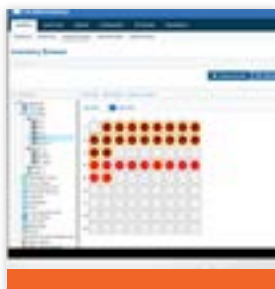
Be more... efficient



[Learn more](#)

Improve connectivity in your lab with VisioNize® Lab Suite

- > Increase productivity and avoid equipment downtime with customizable notifications
- > Stay ahead with alarm and event notifications via email and text message

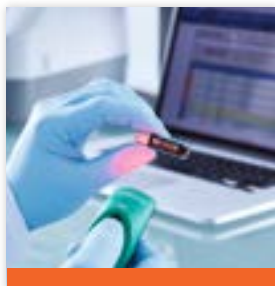


[Personal demo](#)

Elevate your research with eLab®

- > Visualize the entire lab and set up storage locations according to your specifications
- > A full audit trail is automatically recorded for any sample in the lab
- > Any changes are kept in a chronologically ordered event log that follows GLP/GMP guidelines

Book your free personal demo now!



[Learn more](#)

Keep track of your samples with SafeCode CryoStorage vials

- > Safe sample identification with multi-level barcoding
- > Pre-labeled off-the-shelf for immediate use
- > ID-specific tube information, such as lot numbers and certificates, is available on the Eppendorf website



Be more... informed

Staying informed is the key to better time management. When you're well informed, you can quickly identify important tasks, deadlines and opportunities. Quicker access to key resources improves work efficiency and task completion. Instead of wasting time searching, create order in your lab to find your samples more easily.



[Visit our website](#)



[Eppendorf app](#)



[Lab Academy](#)



[Register now](#)

Stay in the Know

Subscribe to our exclusive Eppendorf Newsletters for the latest updates on:

- > New Eppendorf products
- > Limited promotional offers
- > Exciting events
- > Application support for your Eppendorf products
- > And other exciting topics

Your local distributor: www.eppendorf.com/contact

Vaudaux-Eppendorf AG · Im Kirschgarten 30 · CH-4124 Schönenbuch/Basel
www.eppendorf.com · eppendorf@eppendorf.ch · Tel.: 0041 61 482 14 14

www.eppendorf.com

Eppendorf®, the Eppendorf Brand Design, epT.I.P.S®, Eppendorf Tubes®, TwinLid®, Eppendorf twin.tec®, VisioNize®, eLab® are registered trademarks of Eppendorf SE. All rights reserved, including graphics and images. Copyright© 2024 by Eppendorf SE.