

## BioFlo® 720 Software – Revision 02.01

### Description of changes:

Software revision 02.01 incorporates the following solutions/additions to improve the performance of your bioprocess controller:

- > Hamilton ARC sensor compatibility
- > All stop button
- > Scale Up Assist (Custom vessel & BioFlo 320 water-jacketed vessels have been added)

### Instructions:

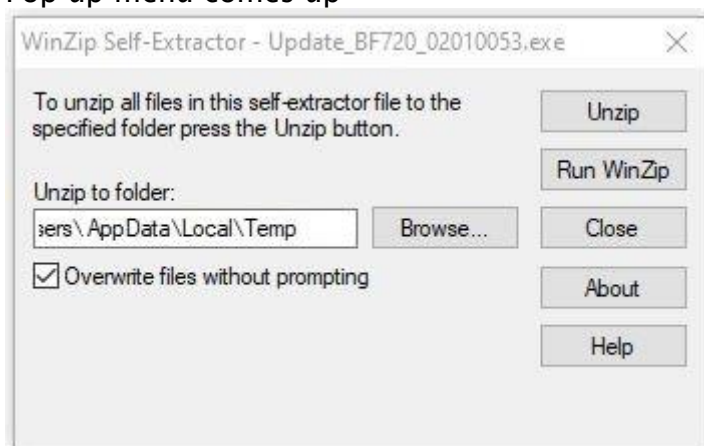
Determine which software version is currently installed in your controller:

- > Turn on your control station
- > Select the 'Setup' button from the bottom menu bar
- > Select the 'Software' Tab
- > View the software version

If the installed software is lower than the latest version listed above, perform the upgrade as listed below. You may want to print this document for easy access to the instructions while you work.

NOTE: Some recipes may not be compatible with the system after firmware upgrades. We recommend manually recording all recipe values prior to upgrading your firmware, as well as backing them up on an external USB memory stick before performing the upgrade.

1. Extract the downloaded .ZIP file to your hard drive (suggest "desktop") if you have not already done so.
2. Install a USB external memory device into the computer's USB drive connection
3. Go to the extracted .EXE file **within** the extracted folder on your hard drive and double click the file.
4. Pop up menu comes up



5. Select Run and click OK.
6. From the pop-up menu - under "Unzip to folder" - click "Browse" and select USB drive (Removable Disk) and click OK.
7. Select Unzip button and press OK.
8. After extraction is complete select "Close" to close the dialog box.

9. Remove the USB external memory device from the computer and insert it into your control station USB port on the back of the unit.
10. On your control station, select the 'Setup' tab.
11. We recommend to note down autoclavable/single-use, vessel size, and sensor, heating and agitation drive settings for use in step 17.
12. Select the 'Software' tab.
13. Select the 'Refresh' button (magnifying glass) located in the 'Software' panel until the update appears in the middle window.
14. In the 'Updates' list, select the file to be installed.
15. Select the 'Update' button and the update routine will begin.
16. After the update is complete – you will come to the main screen.
17. Verify that the new version is running by selecting the 'Setup' button and then the 'Software' tab. Under "Software" confirm you have the latest revision.
18. Select "Setup" button on bottom right and check the settings in the 'System' tab. Apply changes if necessary to the vessel type, vessel size, sensors, etc. as noted down in step 10 and confirm with the 'Checkmark' button.
19. The unit will now be running with the new version that was installed on it.
20. The USB external memory device can be removed from the unit.

Congratulations! You have installed the latest performance enhancements. Check the Eppendorf Website regularly for new revisions.