

# High-quality gDNA Purification on the epMotion® 5075t Liquid Handler

Reproducible and high throughput total DNA extraction



The Zymo Research Quick-DNA™ Magbead Plus Kit can be easily automated on the epMotion® 5075 liquid handler with simple standardized methods to yield ultra pure genomic DNA for sensitive downstream applications such as qPCR, DNA sequencing, arrays and methylation studies.

## Product features of the epMotion®

- > 14 SLAS/ANSI plus small position for special reagent reservoir rack (3 reservoirs)
- > Maximum pipetting accuracy from 0.2 µL to 1 mL
- > Gripper tool for transport of labware and stacking of up to 5 plates on deck
- > Automatic tool exchange can be easily programmed in the epBlue software
- > Integrated Eppendorf ThermoMixer® and 2<sup>D</sup>Mix-Control improves DNA yield and downstream application results
- > Peltier element for heating and cooling of samples and/or reagents
- > Integrated LEDs for visual feedback of system status like idle, run in progress or run finished

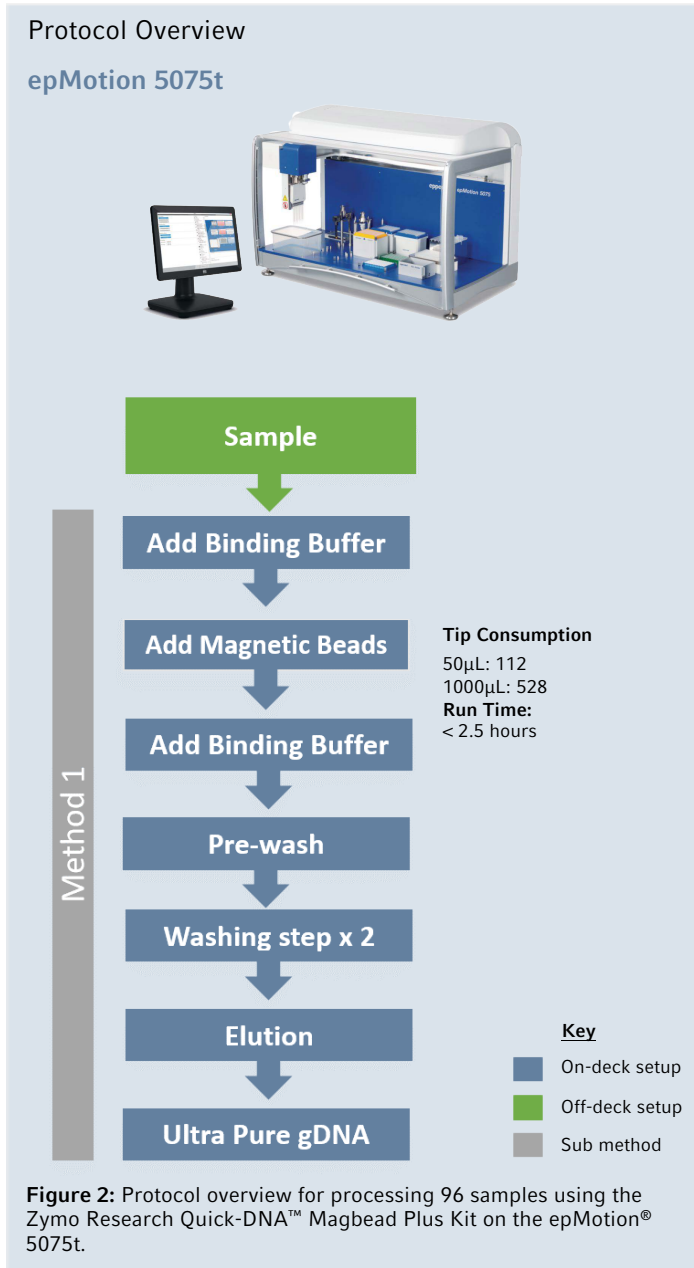
## Your advantages

- > **Reproducible results:** Simple standardized procedure to extract high-quality DNA from any sample type and eliminate well-to-well variation in DNA recovery
- > **Walkaway configuration:** Labour-intensive steps are fully automated to your reduce hands-on and processing time
- > **High-throughput:** Automated processing of up to 96 samples in less than 2.5 hours
- > **Highly flexible:** Configurable worktable to support your daily sample numbers
- > **Enhanced safety:** Fully autoclavable dispensing tools, optional UV lamp and HEPA filter for user and sample safety

## Workflow Overview



**Figure 1:** Automated workflow for the Zymo Research Quick-DNA™ Magbead Plus Kit on the epMotion® 5075t. Steps shown in brown can be automated on the epMotion.



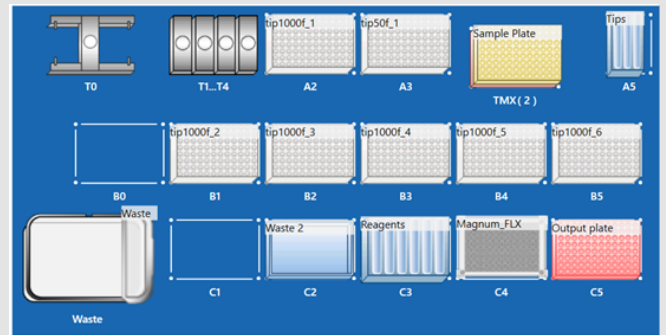
**Figure 2:** Protocol overview for processing 96 samples using the Zymo Research Quick-DNA™ Magbead Plus Kit on the epMotion® 5075t.

## References

- [1] Zymo Research, Quick-DNA™ Magbead Plus Kit, Instruction Manual Ver 2.0.1.
- [2] Data provided by Ankara University, Turkey

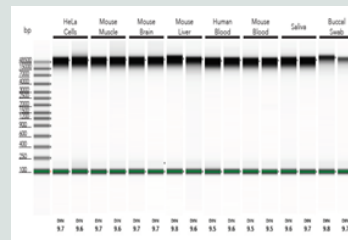
Contact your sales specialist for more information:

## Worktable Configuration

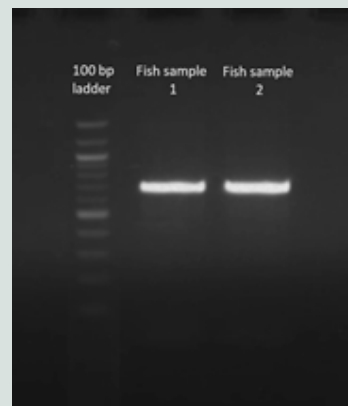


**Figure 3:** Worktable layout for Method 1

## Application Data



**Figure 4:** High quality DNA extracted using the Quick-DNA™ Magbead Plus Kit from different sample types and analyzed using the Agilent 2200 TapeStation®.<sup>1</sup>



**Figure 5:** Distinct bands of PCR amplicons at approximately 700bp. Results after amplification of extracted DNA from the 2 fish tissue sample replicates using QuickDNA™ Magbead Plus Kit.

Name	Fish Sample 1	Fish Sample 2
Concentration (ng/µL)	52.8	61.1
A260/A280	1.813	1.812
A260/A230	1.441	1.784

**Table 1:** DNA yield and quality was assessed by the Thermo Scientific Nanodrop Spectrophotometer. DNA extracted from 2 fish tissue sample replicates using the Zymo Research QuickDNA™ Magbead Plus Kit automated on the epMotion 5075t.